





Brice Gardens, Buntingford, SG9 9GR

Westwood Leber are delighted to bring to the market this fantastic four bedroom, two bathroom home arranged over three floors, boasting over 1800 sq ft , with beautiful and spacious interiors throughout, a private garden, driveway, garage and situated within walking distance to the charming village High Street and local schooling.

The property benefits from entrance hall, cloakroom WC, study/playroom, fully fitted kitchen/ dining room with built-in appliances and French doors to the garden and access to the utility room. On the first floor is the living room and the master bedroom with en-suite shower room and spaces for wardrobes. The top floor offers three bedrooms and the family bathroom.

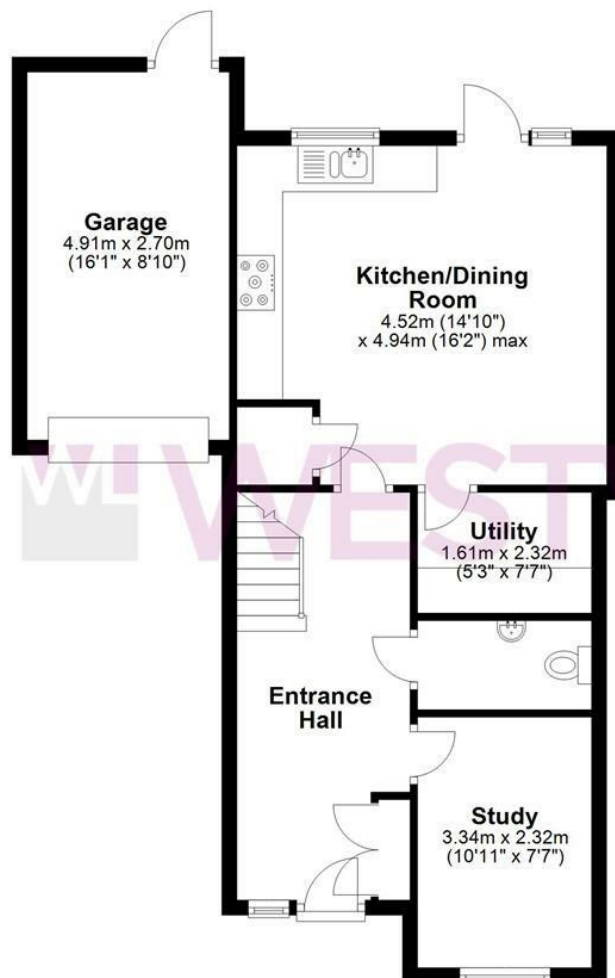
Externally the property offers a rear garden with paved terrace leading down to an artificial lawn, raised flower borders and a further seating area to the rear. Timber shed and access leading to the garage. Whilst to the front this property benefits from a driveway with parking for two cars.



WESTWOODLEBER

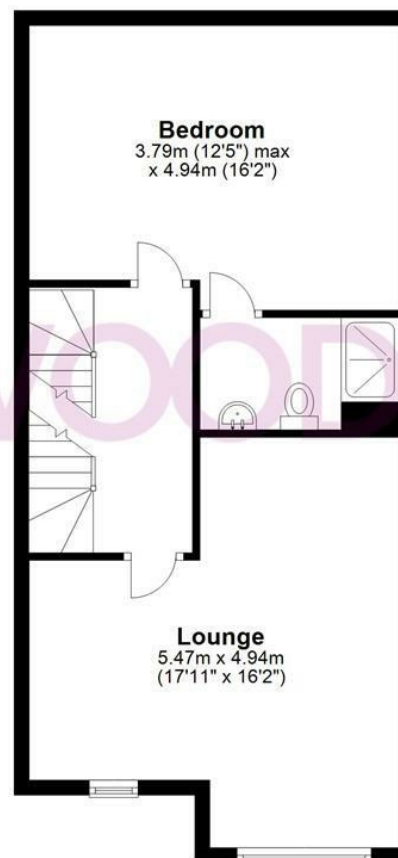
Ground Floor

Approx. 64.2 sq. metres (691.5 sq. feet)



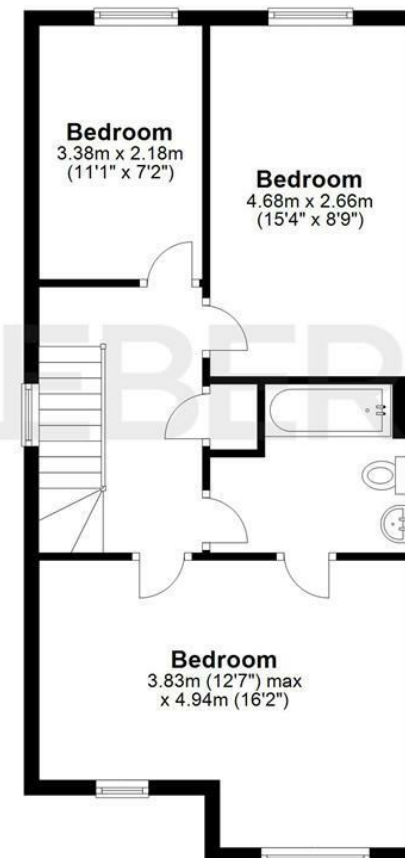
First Floor

Approx. 51.9 sq. metres (558.8 sq. feet)



Second Floor

Approx. 51.9 sq. metres (558.8 sq. feet)



Total area: approx. 168.1 sq. metres (1809.0 sq. feet)

FOR ILLUSTRATIVE PURPOSES ONLY. NOT TO SCALE. Whilst every attempt had been made to ensure the accuracy of the floor plan shown, all measurements, positioning, fixtures, features, fittings and any other data shown are an approximate interpretation for illustrative purposes only and are not to scale. No responsibility is taken for any error, omission, miss-statement or use of data shown.

Property marketing provided by www.fotomarketing.co.uk











WESTWOODLEBER